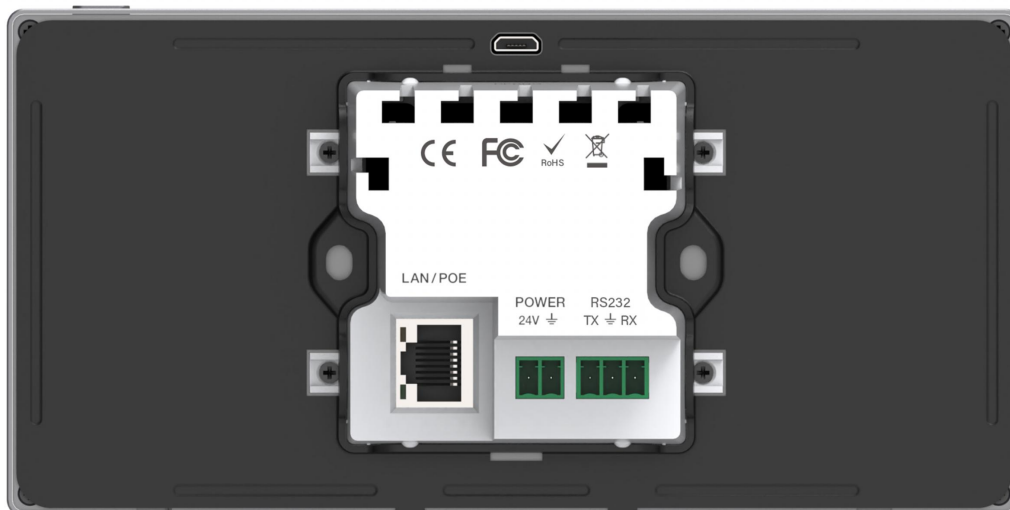
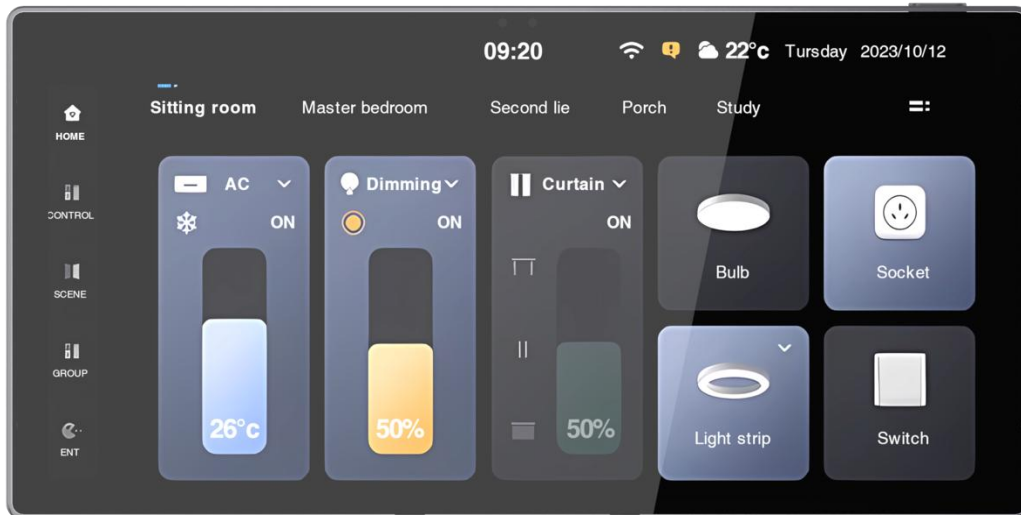


iControl KT069

6.9 Inch Control Touch Panel

User Manual V1.1



THANK YOU FOR PURCHASING THIS PRODUCT

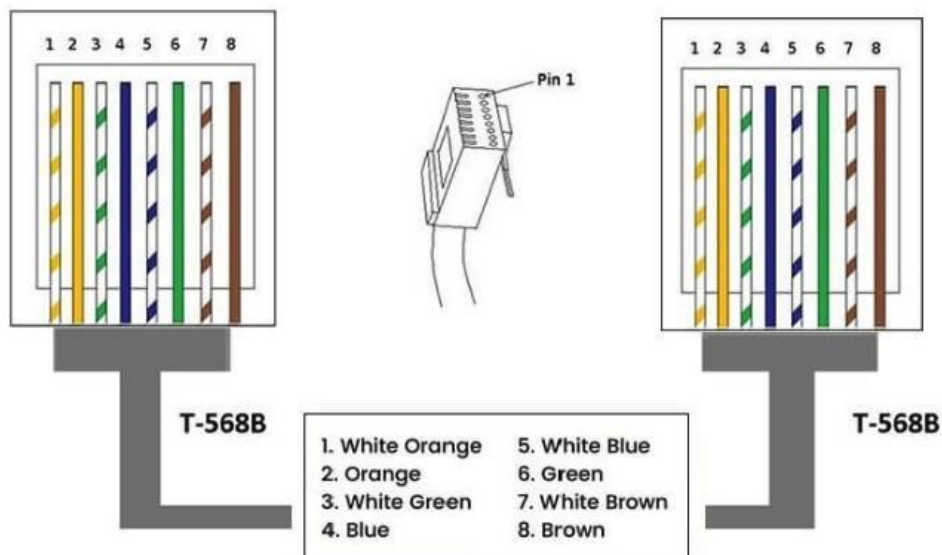
For optimum performance and safety, please read these instructions carefully before connecting, operating or adjusting this product. Please keep this manual for future reference.

SURGE PROTECTION DEVICE RECOMMENDED

This product contains sensitive electrical components that may be damaged by electrical spikes, surges, electric shock, lightning strikes, etc. Use of surge protection systems is highly recommended to protect and extend the life of your equipment.

CAUTION

The network cable connection method required for this product is direct connection. Please do not cross connect.



Direct Interconnection Method



TABLE OF CONTENTS

- 1. INTRODUCTION 4
- 2. FEATURES 4
- 3. PACKAGE CONTENTS 4
- 4. SPECIFICATION 5
- 5. INTERFACE 6
- 6. INSTALLATION 8
- 7. DIAGRAM 9



1. INTRODUCTION

The programmable touch panel is designed to be utilized in the sectors of automated office system, multi-media room and smart home. With a programmable interactive user interface over configuration protocols, the integrated system provides intelligent networking service. The wall-in touch panel, with standard 86 box design, is equipped with a capacitive touch screen with a resolution of 1440*720, and it supports one LAN port and one RS-232 serial port. It is used in a diverse range of installations and applications across industries including multi-media conference rooms, multi-functional halls, training centers, show room, broadcasting studios and industrial automation.

2. FEATURES

- ARM Cortex-A55 architecture 1.8Ghz main frequency.
- Android 11.0 system, 4GB DDR4 RAM, 32GB EMMC Flash.
- 6.9-inch 1440*720 (1:1) resolution, capacitive touch screen, standard UK box wall-in design.
- One machine with two modes, can be used as touch screen central control or user terminal.
- Support one RS-232 serial communication port, configuring 8 baud rates in the range of 2400-115200bps.
- Support access to the host system management web page with a password.
- Interface design and programming through IDE design tools.
- Compliant with industry standard network communication protocols (TCP/IP, Http, UDP, Websocket)
- With 1 Gigabit network port, the highest rate up to 1G/bps.
- Dual power supply mode, supporting PoE or DC power supply.
- Support factory reset.

3. PACKAGE CONTENTS

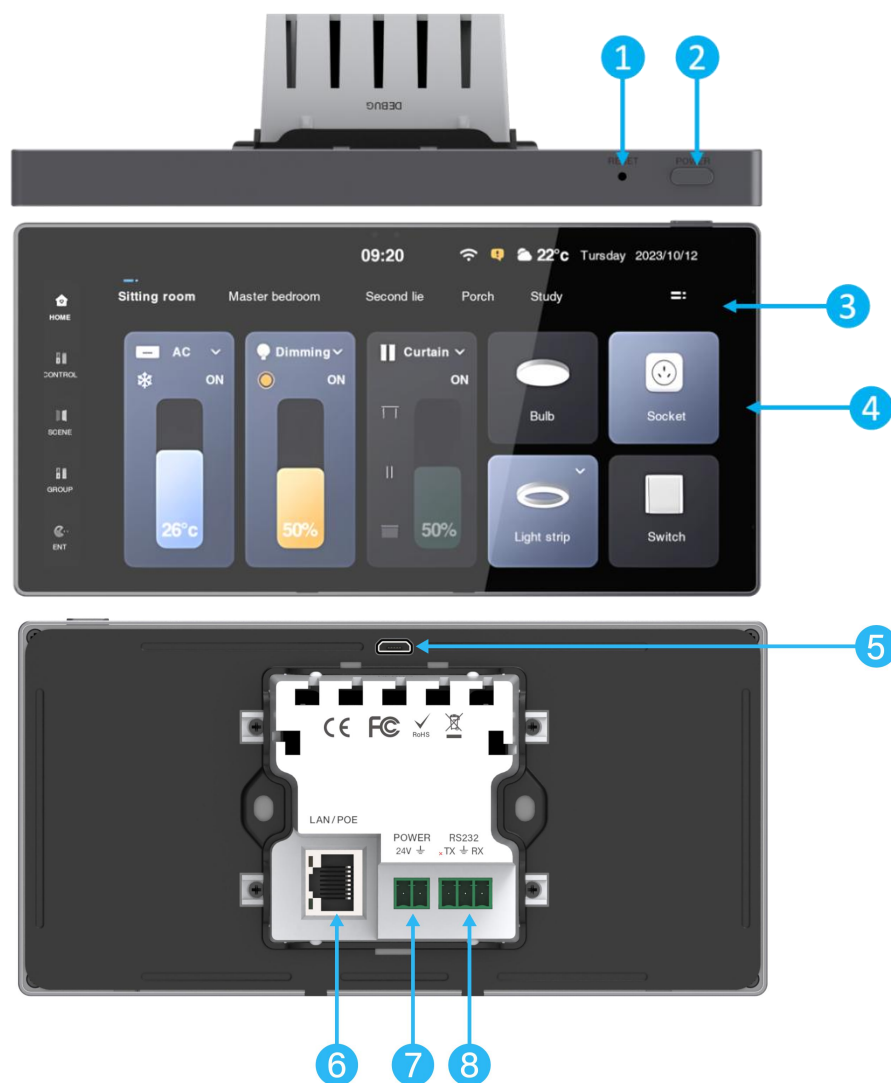
- 1x Programmable Touch Panel (Wall-in)
- 1x 3pin-3.81mm Phoenix Connector (male)
- 1x 2pin-3.81mm Phoenix Connector (male)
- 1x Wall Mounting Bracket
- 2x Bracket Fixing Screw
- 1x User Manual

4. SPECIFICATION

Model	iControl KT069
Name	6.9 Inch Control Touch Panel
CPU	ARM Cortex-A55 1.8GHz
Operation System	Android 11
RAM	4GB DDR4 RAM
Flash Memory	32GB EMMC Flash
Resolution	1440*720
Touch Type	Capacitive Touch Screen
ESD Protection	IEC 61000-4-2: ±8kV (Air-gap discharge) & ±4kV (Contact discharge)
RS232	1x 3-pin Phoenix Connectors, for RS232 serial data communication
LAN/POE	1x Standard 10M/100M/1000M Ethernet RJ45 port, supporting PoE function
POWER	1x 2-pin Phoenix Connectors, for power supply
DEBUG	1x Micro USB, system debugging port
Housing	Front Panel: Touch Screen Frame: Plastic Rear Case: Plastic
Color	Front Panel: Black Frame: Black Rear Case: White
Dimension	172mm (L) × 87mm (H) × 44.5mm (D)
Weight	390g
Power Supply	24V DC/1A or PoE
Power Consumption	8W

Operating Temperature	0°C ~ 40°C / 32°F ~ 104°F
Storage Temperature	-4°F ~ 140°F / -20°C ~ 60°C
Operating Humidity	20% ~ 80% (relative humidity, non-condensing)
Storage Humidity	10% ~ 90% (relative humidity, non-condensing)

5. INTERFACE

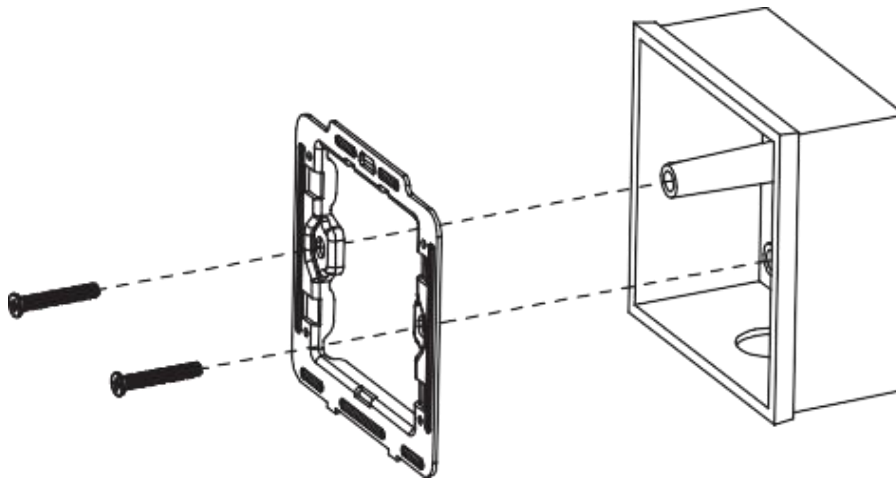


No.	Name	Function Description
1	RESET	<p>Reboot: After the device boots up, press and hold the RESET button for more than 1s less than 5s, then release it, the device will reboot. The device won't upload the user projects after rebooting.</p> <p>Reset: After the device boots up, press and hold the RESET button for more than 5s, then release it, the device will reset the user configuration information, the IP will be restored to the default settings (IP address: 192.168.0.101, subnet mask: 255.255.0.0), the login password of the management page will be initialized to "admin", the device time will be initialized to automatic acquisition mode, but user projects won't be deleted by factory initialization.</p>
2	POWER	Used for screen off or wake-up.
3	Touch Screen	Capacitive touch screen. The user control interface can be configured through the IDE tool.
4	Light & Distance sensor	Automatically adjust the brightness of the touch screen or light up the screen based on light and distance.
5	DEBUG	Micro USB port. The reserved port for system debugging.
6	LAN/PoE	<p>Standard 10M/100M/1000M Ethernet RJ45 port with default auto-negotiated speed for device connection, projects uploading & downloading, network communication and debugging.</p> <p>By default, the DHCP function of the control panel is disabled, and the IP setting is as follows: IP address: 192.168.0.101, subnet mask: 255.255.0.0</p>
7	POWER	The power input port (2-PIN phoenix connectors), used for connecting with external 24V DC power supply.
8	RS232	<p>Programmable RS232 serial port, which is a 3-pin phoenix connector (male), compliant with RS232 communication protocol, and capable of configuring 8 baud rates in the range of 2400-115200bps.</p> <p>The pin-outs of the RS232 port are PIN1 for TX, PIN2 for GND, and PIN3 for RX.</p>

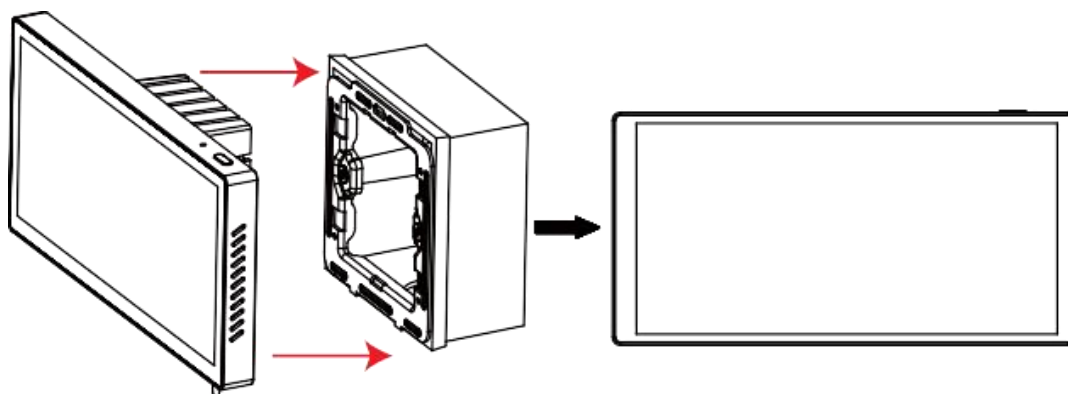
6. INSTALLATION

This wall-in touch panel can be mounted on a standard UK wall box, the mounting steps are as follows.

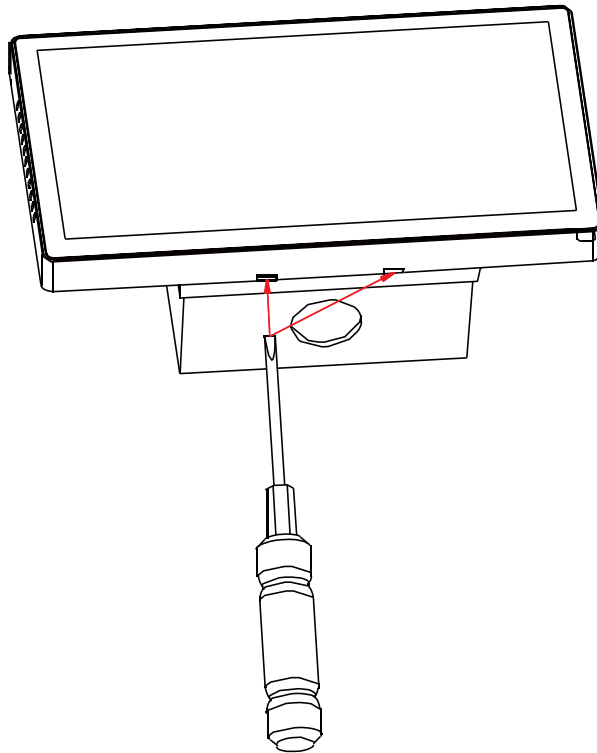
Step 1: Install the included wall mounting bracket onto the UK wall box and fasten it with 2 screws.



Step 2: Align the back of the touch panel with the slots of the wall bracket and push it in. Press the aluminum edge of the touch panel to ensure that the buckles are in place, and the installation is complete.



To remove the mounted touch panel, insert a screwdriver into the two holes indicated by the arrows and pry the machine out of the bottom box.



7. DIAGRAM

