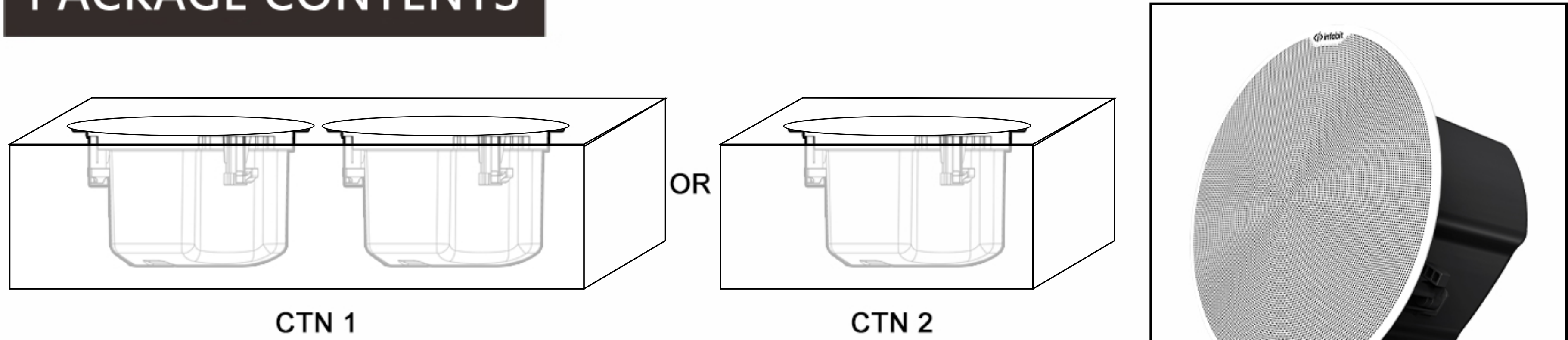


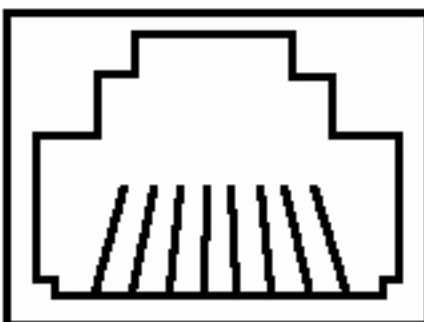
Prompt Information

PACKAGE CONTENTS



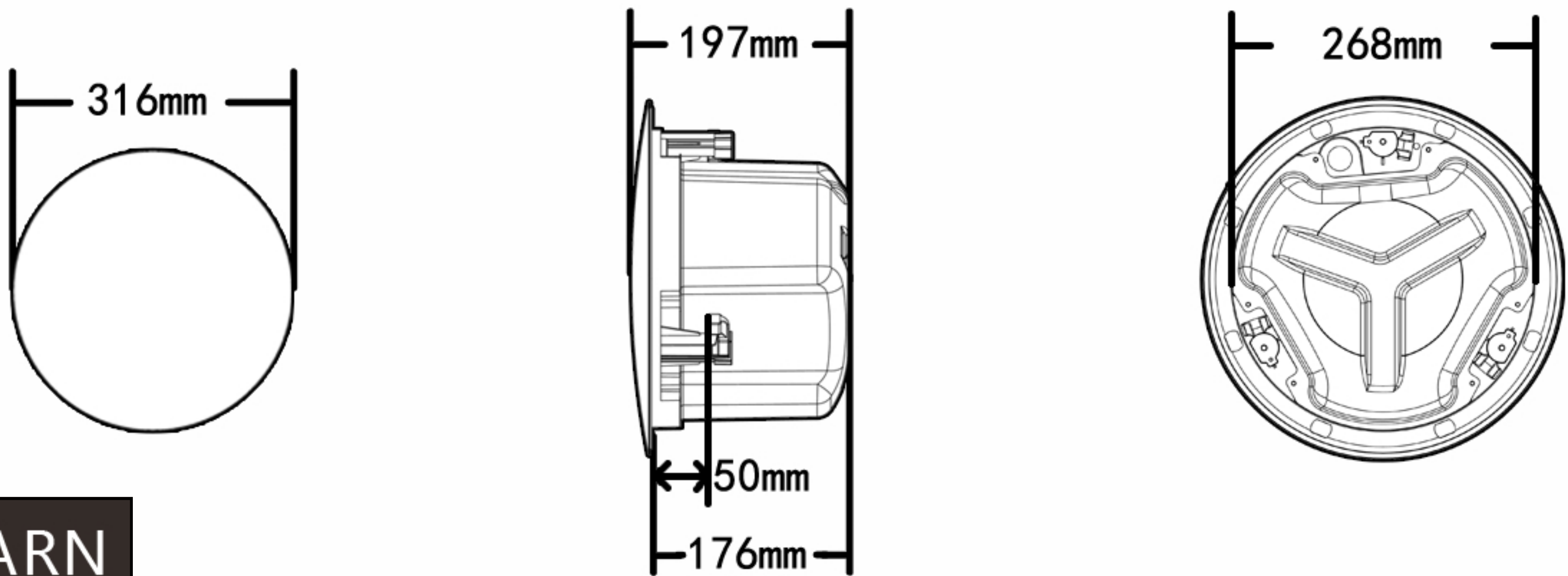
This products package CTN has two models (in pair or single), refer to your invoice.

CONNECTION METHOD



RJ45 network port, network cable transmission audio and PoE power supply.

PRODUCT SIZE



WARN

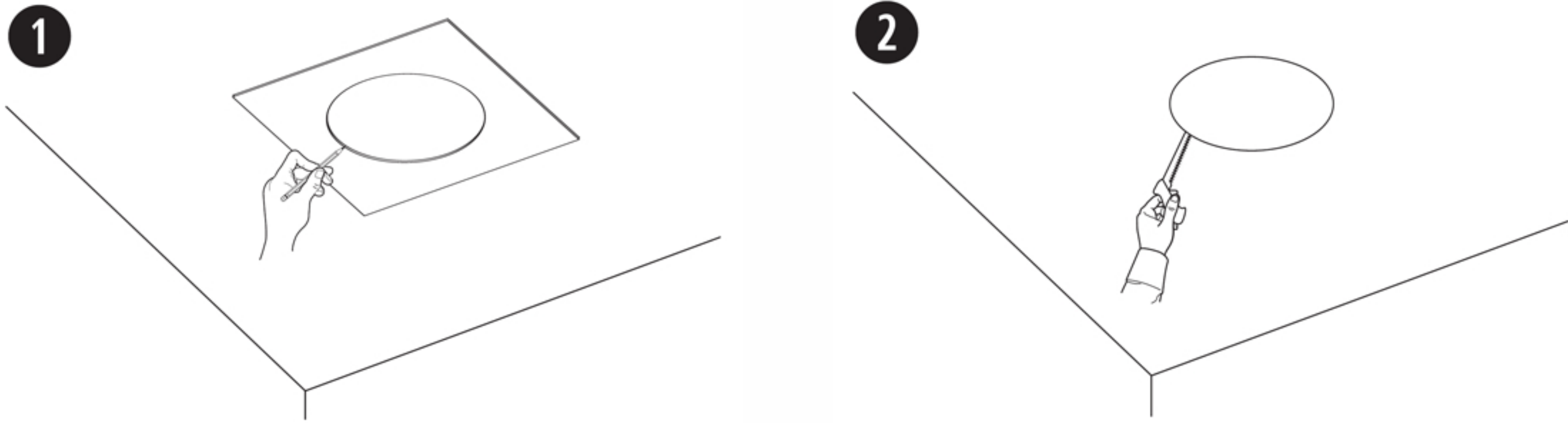
The plastic bag inside the package may pose a suffocation hazard, please keep it away from babies or children.
Please follow this instruction manual to correctly install the two types of safety ropes included in the package.

DAILY MAINTENANCE

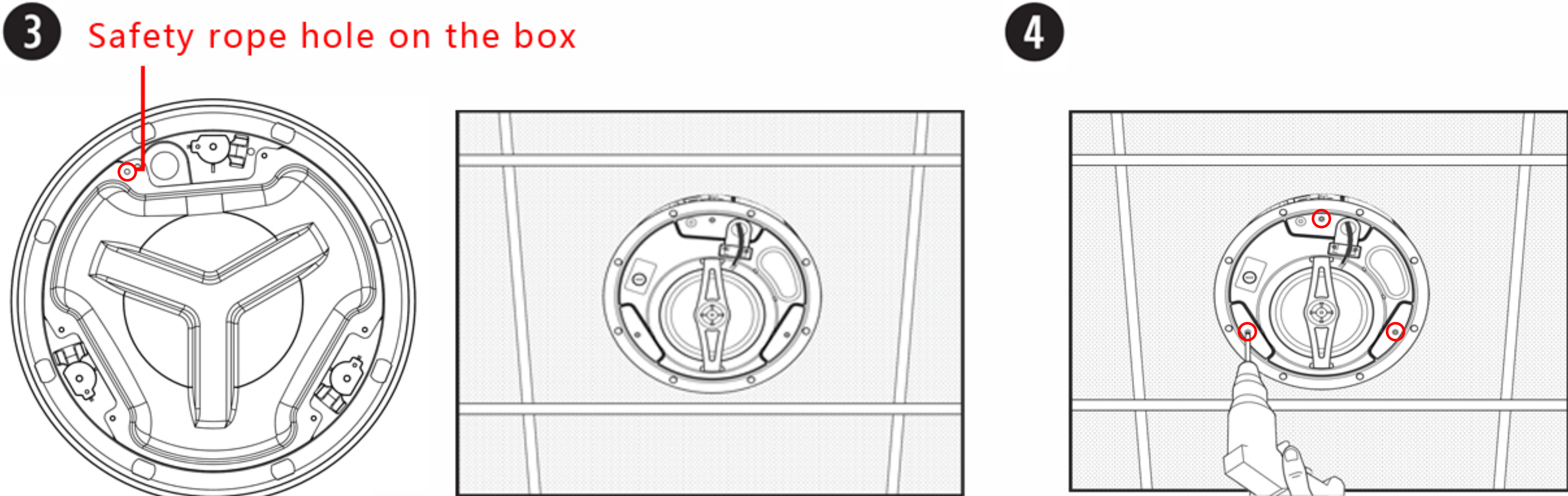
During the use of the product, please check regularly whether the fixing screws are loose. If they are loose, please tighten them in time.
During the use of the product, please check regularly whether the safety rope has fallen off. If it has fallen off, please maintain it in time.

Installation Steps

- 1、 Use the hole size paper template to trace the hole onto the ceiling.
- 2、 Cut corresponding holes in the ceiling.



- 3.Install the box safety rope and fix it to an appropriate load-bearing position on the wall.
Then feed the speaker wires through the cable entry opening and insert the speaker into the opening.
- 4.Tighten the clip screw to secure the speaker.(If using a drill, set it to a low torque setting.)



- 5.Connect the terminal to the speaker cable. Tie one end of the grille mounting rope into one of the four safety rope holes on the back of the grille. Tie the other end of the grille safety cable to the cable pin and insert it into the cable pin hole on the speaker.
- 6.Fix the grille on the speaker, and the grille will be magnetically attached to the speaker.

