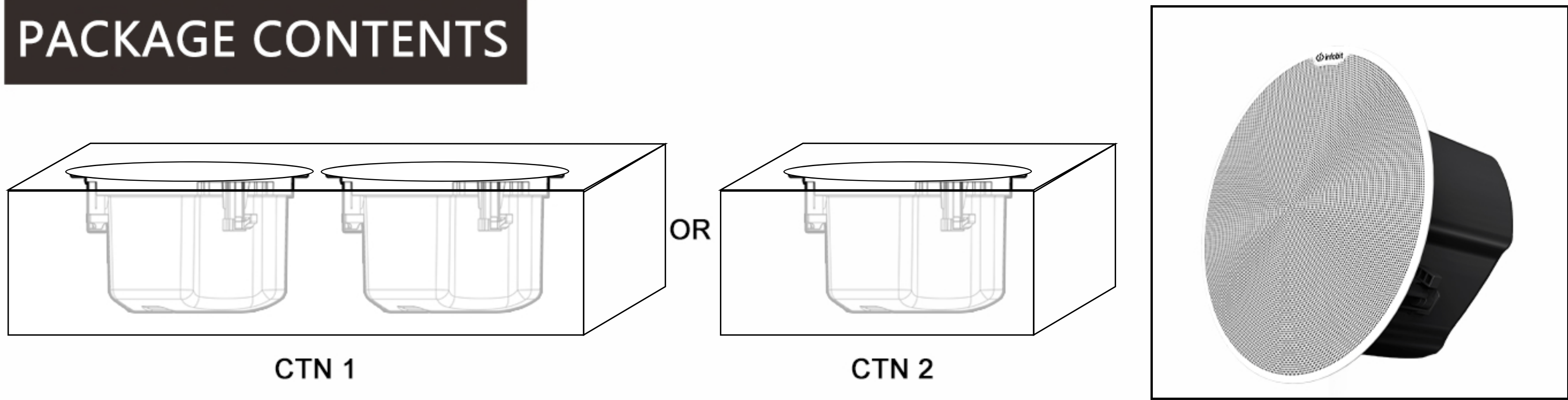


PROMPT INFORMATION

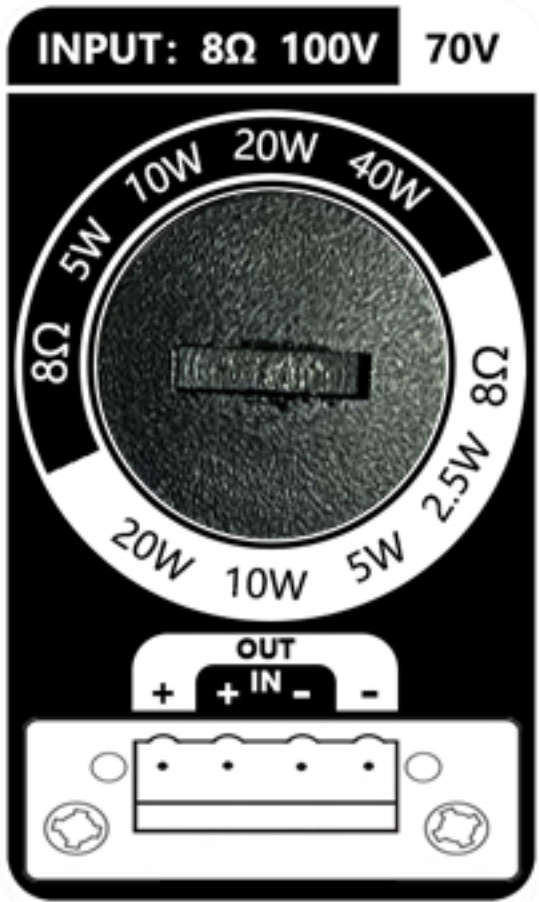
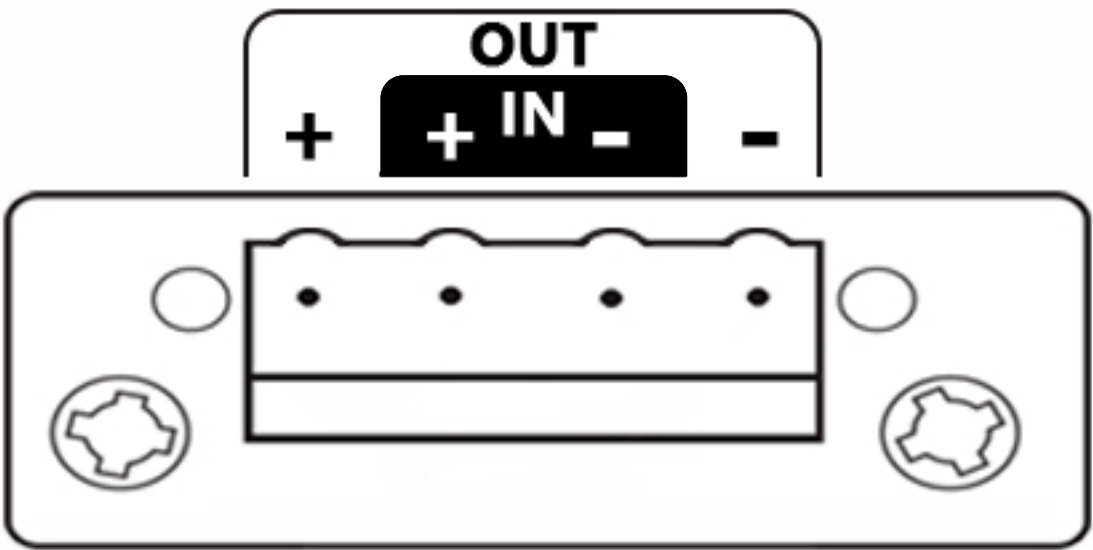
PACKAGE CONTENTS



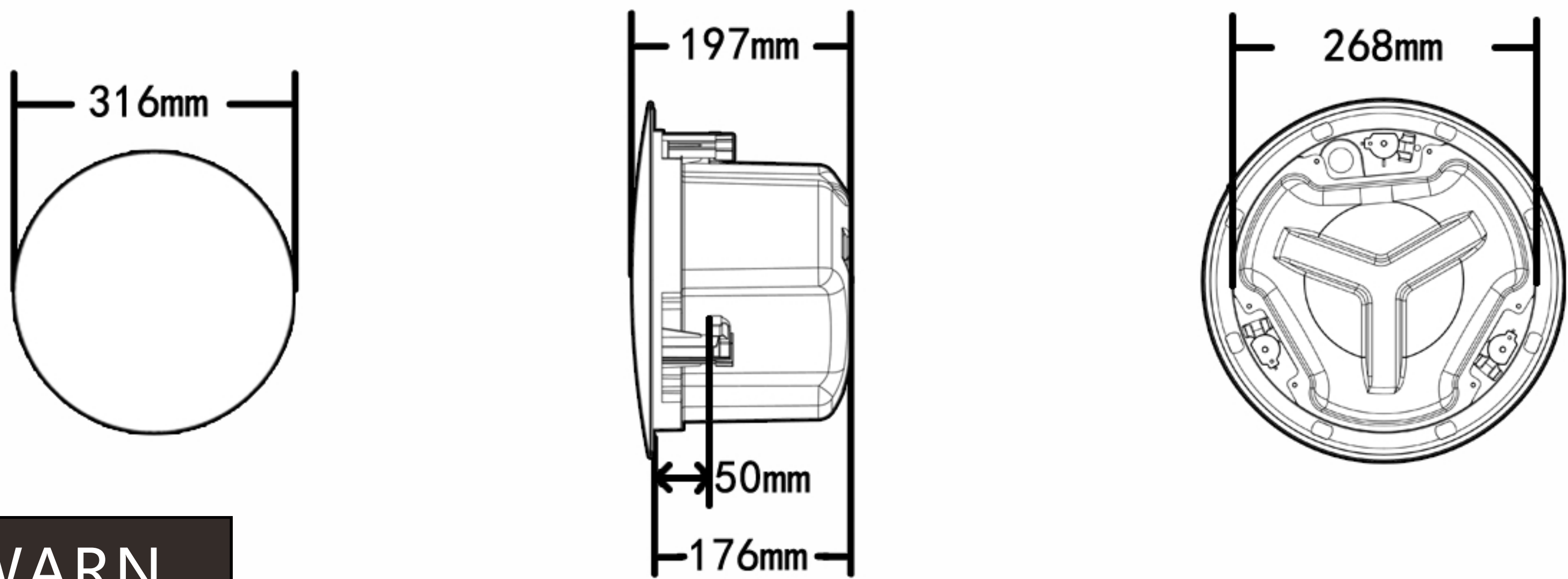
This products package CTN has two models (in pair or single), refer to your invoice.

CONNECTION METHOD

IN(The middle two interfaces)Connect to power amplifier output
OUT(Two interfaces on both sides)Connect to the IN port of another speaker
When inputting constant voltage, you need to select the power level before wiring.
It is strictly forbidden to select the 8Ω gear when inputting constant voltage.



PRODUCT DIMENSIONS



WARN

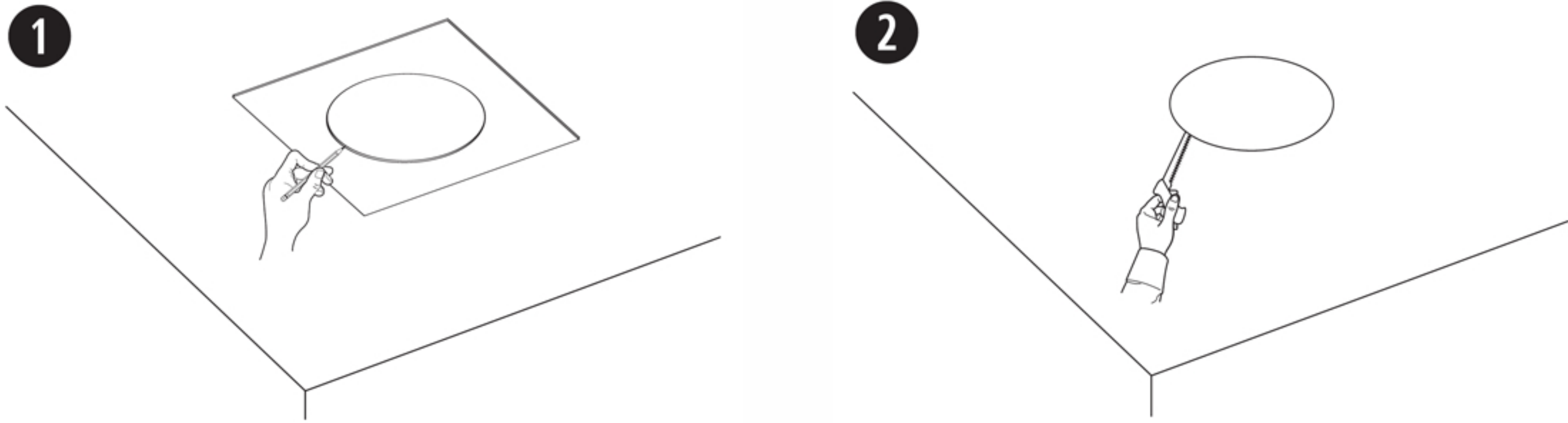
The plastic bag inside the package may pose a suffocation hazard, please keep it away from infants or children.
Please follow this instruction manual to correctly install the two types of safety ropes i ncluded in the package.

DAILY MAINTENANCE

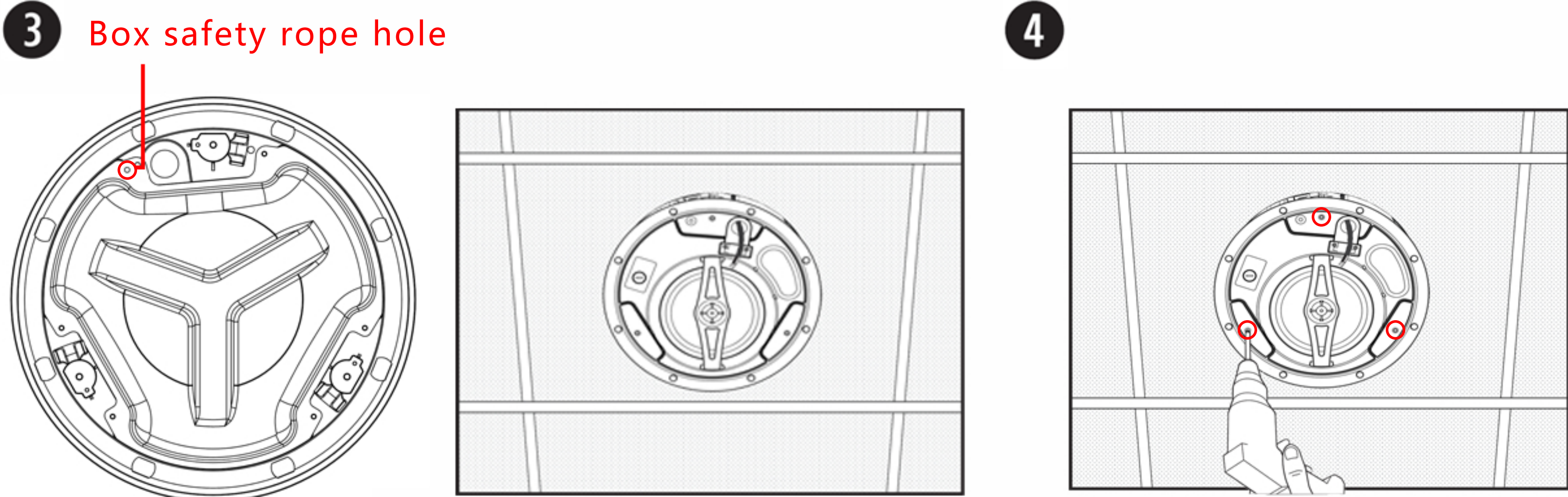
During the use of the product, please regularly check whether the fixing screws are loose. If they are loose, please tighten them in time.
During the use of the product, please regularly check whether the safety rope has fallen off. If it has fallen off, please maintain it in time.

INSTALLATION STEPS

- 1.Use the hole size paper template to trace the holes onto the ceiling with a pen.
- 2.Cut corresponding holes in the ceiling.



- 3.Install the box safety rope and fix the safety rope at a suitable load-bearing position on the wall. Then thread the speaker wire through the cable entry and insert the speaker into the opening.
- 4.Tighten the snap screws to secure the speaker. (If using an electric drill, set it to low torque.)



- 5.The terminal is connected to the speaker cable. Tie one end of the grille installation rope into one of the four safety rope holes on the back of the grille.
Tie the other end of the grille safety rope to the safety rope pin, and then insert it into the safety rope pin hole of the speaker.

- 6.Fix the grille on the speaker, and the grille will be magnetically attached to the speaker.

